

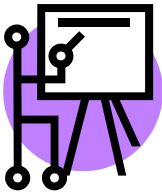
West Berkshire Independent Living Network

## Social Care Assessments

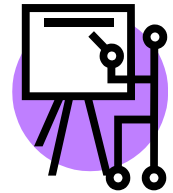
# Masterclass

**Friday 23 November 2012**

11:00 am – 4:00 pm



Broadway House  
4-8 The Broadway  
Newbury RG14 1BA



**A workshop to explore  
ways to optimise an individual's outcome  
from social care assessments.**

For disabled and older people, paid or unpaid workers in welfare rights or social care, including advisors, informal carers, family members and advocates.

The workshop is run by a disabled person with direct experience of the social care system and live-in PAs/carers. Topics include:

- The assessment processes
- Eligibility criteria
- Care support planning



More information and a booking form are available on WBILN's website: [www.wbilyn.com](http://www.wbilyn.com). Or please contact Deborah@wbilyn.com / 01635 760425 / 07905 521452